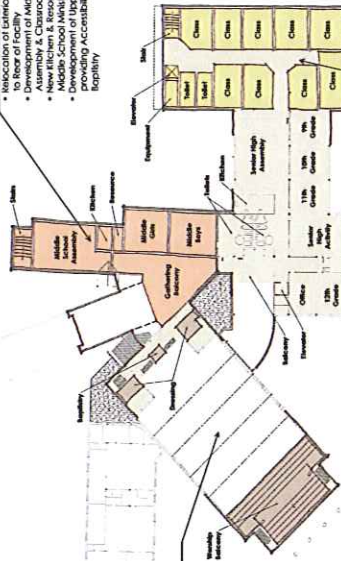


- PHASE 1B - MIDDLE SCHOOL GATHERING ADDITION**
- Relocation of Existing Systems Equipment to Rear of Facility
 - Middle School Suite, with Assembly & Classrooms for 50 Children
 - New Storage & Resource Storage for Middle School
 - Development of Upper Gathering Balcony providing Accessibility to Existing Dining/Lobby



- PHASE 1C - SANCTUARY REMODEL**
- Relocation of Existing Systems Equipment to Rear of Facility
 - Middle School Suite, with Assembly & Classrooms for 50 Children
 - New Storage & Resource Storage for Middle School
 - Development of Upper Gathering Balcony providing Accessibility to Existing Dining/Lobby

- PHASE 1A - LOWER FLOOR RENOVATION**
- Temporary Relocation of Elementary & Adult Classes
 - Demolition of Area to Structural Components
 - Suite to serve 60 Children
 - Development of 6 Young Adult Suite for 60 persons
 - Remodeling/Upgrade of Existing Lobby

UPPER FLOOR PLAN

- PHASE 1B - MUSIC SUITE & GATHERING ADDITION**
- Lower Level of Sanctuary
 - Temporary Relocation of Music Ministry to renovated Educational Building
 - Relocation of Music Ministry to renovated Educational Building
 - Development of Music Behavioral Suite, with Choir
 - Relocation of Music Behavioral Suite, with Choir
 - Relocation of Music Behavioral Suite, with Choir
 - Music Storage, & Restroom Access
 - Creation of Gathering/Media Loft for Reading & Internet Access
 - New Connecting Balcony
 - Weddings, Receptions, Small Fellowship, LLC

- PHASE 1C - SANCTUARY REMODEL**
- Relocation of Existing Systems Equipment to Rear of Facility
 - Middle School Suite, with Assembly & Classrooms for 50 Children
 - New Storage & Resource Storage for Middle School
 - Development of Upper Gathering Balcony providing Accessibility to Existing Dining/Lobby

- PHASE 2A - ADMINISTRATION/ SENIOR ADULT RENOVATION**
- Relocation of Administrative Office Space to provide 8 Senior Adult Classrooms for 120 Persons
 - Remodeling/Upgrading of Office & Classroom

MAIN FLOOR PLAN

- PHASE 3B - FAMILY LIFE CENTER REMODEL**
- Construction of Second floor within Existing Family Life Center
 - Development of Commons Area for 125 Persons of Tables/Chairs
 - Separation of Existing Children to Existing Commons Area
 - Development of Educational Classrooms for 37 Persons, with
 - Renovation of Existing Tables.

- PHASE 3A - GYMNASIUM ADDITION**
- Demolition of Existing Lower Stair
 - Development of Multipurpose Facility for Fellowship/Gymnasium
 - Lockers, Restrooms, with New
 - Elevator Addition for Accessibility

- PHASE 2B - ADULT EDUCATION RENOVATION**
- Relocation of Existing Systems Equipment to Rear of Facility
 - Middle School Suite, with Assembly & Classrooms for 50 Children
 - New Storage & Resource Storage for Middle School
 - Development of Upper Gathering Balcony providing Accessibility to Existing Dining/Lobby

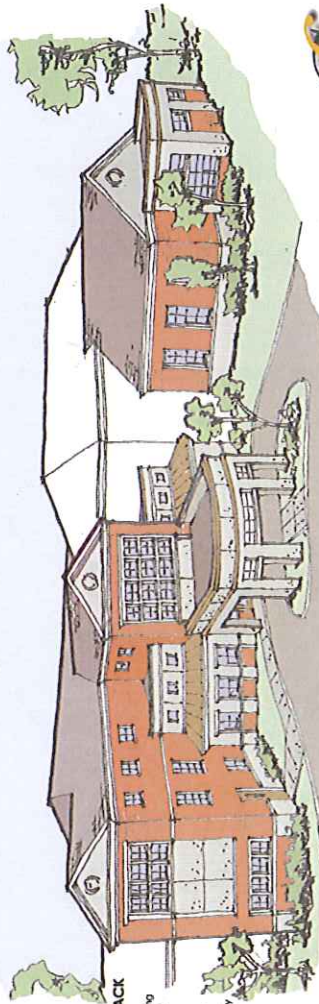
LOWER FLOOR PLAN



- PHASE 3B - EDUCATIONAL EXPANSION**
- Development of 7 Educational Classrooms for 160 Persons within Existing Educational Building
 - Development of "Overlook" Room
 - Spaces to Develop 4 Classrooms for 20 Persons

- PHASE 3A - GYMNASIUM/TRACK ADDITION**
- Development of Rounding
 - Multipurpose Space
 - New Entry from Main
 - New Lobby & Balcony to Lobby
 - Elevator for Accessibility

- PHASE 2A - ADMINISTRATION/ SENIOR ADULT RENOVATION**
- Relocation of Administrative Office Space to provide 8 Senior Adult Classrooms for 120 Persons
 - Remodeling/Upgrading of Office & Classroom



REAR ENTRY VIEW

102 Chaho Road
 Knoxville, Tennessee 37934
 Phone: (865) 777-1720
 Fax: (865) 777-1724
 www.foxhollowgoodson.com

THE FOXHOLLOW GOODSON GROUP

KNOXVILLE, TENNESSEE

Proposed Master Plan for
 First Baptist Church
 Kingston, Tennessee

